



**Nansc hotel**

The finest hospitality

[www.nanshotel.com](http://www.nanshotel.com)



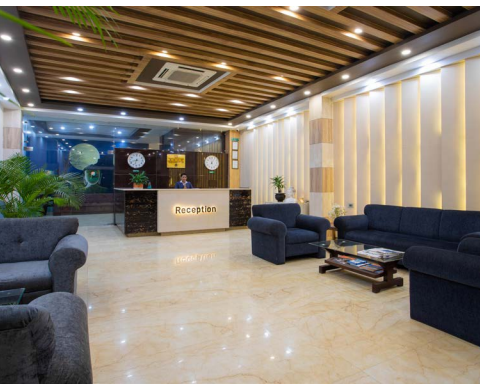
## Welcome to Nansc Hotel

*A mark of distinction*

One of famous veteran from Hospitality Industry in Bhairahawa, Lumbini had dreamed last 10 years before about Hotel Industry set up for next generation. After a decade, Bhairahawa is one of the place where all business tycoon and small scale business owners have started their contribution to carry it on a certain level with support of Mr. Chandra Prakash Shrestha, Managing Director who had established NANSC HOTEL PVT. LTD. on 10th Nov, 2010. Today, even the GOVT. has supported and given his contribution in worth of big scope of Hospitality "LUMBINI AIRPORT "for Buddhist Travelers and Business (CARGO) both.

His Passion for hospitality and success has proven that creative ideas can be transformed into successful tangible reality .From his young age he has donned many roles and achieved some title into Buddhist Tourism Sector and Nepal Tourism Association.

Chandra Prakash Shrestha is the President of Siddhartha Hotel Association (SHA) and one of the 7th Board member into Nepal Tourism Association to promote Lumbini into India. NANSC is the landmark for Buddhist travelers.





## Accommodation

*Luxurious and Comfortable*

Hotel NANSC offers 60 luxuries well highly furnished AC rooms for travelers. The rooms are elegantly furnished, quite spacious, and tastefully decorated including luxury en-suite facilities with complimentary amenities pack offering comfort and convenience.

560 sq.ft

**01** Presidential Suite

480 sq.ft

**02** Suite Room

360 sq.ft

**01** Jr. Suite Room

280 sq.ft

**56** Deluxe Room

### ROOM AMENITIES

- Tea Kettle
- Mini Bar
- LED television
- Shoe police
- Hair dryer
- Towels
- Hand towels
- Saving kit

## Restaurant & Bar

*Authentic Multicuisine Delicious Ingredients*

We cater 4000 sq.ft. areas for two restaurants one multicuisine and other Grilled base Indian restaurant. We have set up outdoor pool with beautiful fountain and banqueting event space with modern amenities.

### CANNS Restaurant and Bar

MULTICUISINE

OPEN 24/7

AIR CONDITION

### Buddha Garden Restaurant

OPEN 7PM TO 11PM

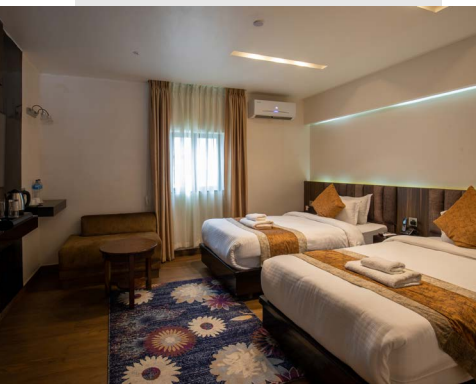
GRILLED & TANDOORI DISHES

### In-Room Dining

GRILLED & TANDOORI DISHES

OPEN 24/7

MULTICUISINE





## Meeting & Events

*A perfect destination for meeting, events, gathering*

We cater to guests 6200 sq.ft. areas of event and meeting space. We have set up outdoor pool with beautiful fountain and banqueting event space with modern amenities.

### **Siddhartha Hall** - 2000 sq.ft. | 4<sup>th</sup> Floor

NATURAL LIGHTS: NO  
ENTRY POINT: OPEN  
QUALITY GRANTED  
IMPRESSIVE DECORATION

### **Buddha Board Room** - 800 sq.ft. | 4<sup>th</sup> Floor

NATURAL LIGHTS: NO  
ENTRY POINT: OPEN  
QUALITY STATIONARY  
CATRING FOR MEALS & LIGHT SNACKS

### **Open Sky** - 4000 sq.ft. | Ground Floor

#### **Poolside Venue**

NATURAL LIGHTS: YES  
ENTRY POINT: OPEN  
QUALITY GRANTED  
IMPRESSIVE DECORATION WITH FOUNTAIN

## Facilities & Services

*We offer*

Hotel NANSC offers 60 luxury well highly furnished AC rooms for travellers. We cater to guests 6200 sq.ft. areas of event and meeting space. We cater 4000 sq.ft. areas for two restaurants one multicuisine and other Grilled base Indian restaurant. We have set up outdoor pool with beautiful fountain and banqueting event space with modern amenities.

- Reception
- Travel Desk
- Swimming Pool
- Spa
- Bell Boy
- Casino
- 24hr Room Service
- Board Room
- Currency Exchange
- Safe Deposit Locker
- Laundry Service
- Health Club
- Doctor on Call
- On-site Parking
- Luggage Store
- Accept Credit Cards



**Nansc hotel**  
The finest hospitality

Siddhartha Highway, Siddharthanagar, Bhairahawa

T: +977 71 574701 | E: info@nanschotel.com

www.nanschotel.com